

## Series Strips

Light Range HRRL

Heavy Range with Elastomer Insert  
HRRLE

### General

HY-ROS series strips are an in-house development, derived from the needs of the market.

They enable rapid and secure installation of hose groups and (dynamically loaded) pipe groups.

The accumulation of individual clamps is thus avoided.

HY-ROS series strips offer many advantages:

- Bundled, clear and safe system of laying
- Space-saving and compact arrangement
- Simple and rapid installation
- Reduced installation times
- Vibration, shock and noise damping
- Protection of sensitive components
- Compensation of pipe and cable tolerances
- Different diameters in one series strip

Depending on the application, series strips with a smooth internal surface or with elastomer inserts are used.

Up to 10 pipes/hoses with diameters from 6 mm to 56.4 mm can be fastened as standard in each of the 3 sizes of the various models.

### On request...

... customised solutions in numerous shapes and designs, also with different diameters, can be supplied in addition to the standard series strips.

This allows you to make the most of your time and the available space.

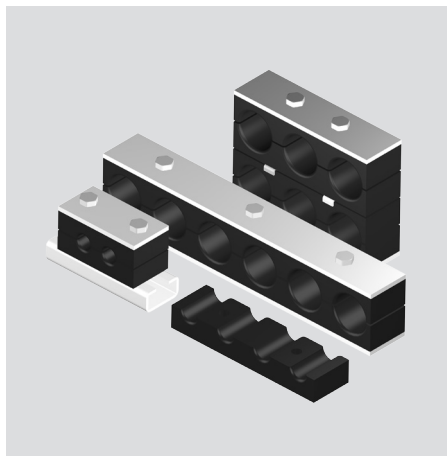
## NOTE

The information in this brochure relates to the operating conditions and applications described. For applications and operating conditions not described, please contact the relevant technical department.

Users bear the responsibility in all cases for determining the product's suitability in the specific application. Figures given for product characteristics are average values for a new product which are subject to an ageing process. Subject to technical modifications and errors.

**HYDAC Accessories GmbH**  
Hirschbachstr. 2  
**66280 Sulzbach/Saar**  
Tel.: +49 (0)6897 - 509-01  
Fax: +49 (0)6897 - 509-1009  
Internet: [www.hydac.com](http://www.hydac.com)  
E-mail: [info@hydac.com](mailto:info@hydac.com)

## Series Strip Light Range HRRL



Size	Pipe outside Ø D [mm]
1L	6
	6.4
	8
	9.5
	10
	12
2L	12.7
	13.7
	14
	15
	16
	17.1
3L	18
	19
	20
	21.3
	22
	23
	25
	25.4

### Model code

(also order example)

HRRL 1L A 4x12 PP 76/2 ST M6 BL

#### Designation

HRRL = HY-ROS series strip

#### Size

1L = size 1L

2L = size 2L

3L = size 3L

#### Model

A = with weld plate, cover plate and hex. head bolt

A1 = with cover plate and hex. head bolt

A1TM = with cover plate, hex. head bolt and mounting rail nut

D = with stacking bolt and safety plate

#### Number of pipes x pipe outside Ø D

(as per models)

#### Material of clamp jaws

PP = polypropylene

PA = polyamide

PAFF = polyamide, flame-retardant to EN 45545-2 R22, R23, HL3

#### Component length / Number of fixing bolts

(as per models)

#### Material of steel parts

ST = steel

A2 = stainless steel (on request)

A4 = stainless steel (on request)

#### Thread type

M6 = metric thread M6

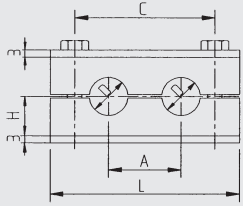
#### Plating of steel parts

BL = weld plate unplated, cover plate zinc-plated, bolts zinc-plated

ZN = weld plate zinc-plated, cover plate zinc-plated, bolts zinc-plated

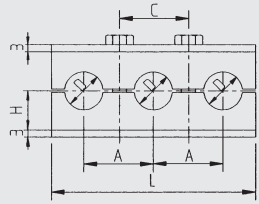
# Dimensions [mm]

## 2 pipes with 2 fixing bolts



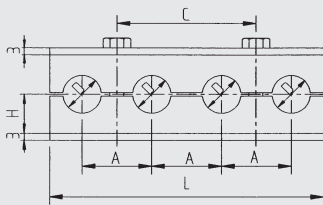
Size	A	C	H	L
1L	20	40	13.5	60.5
2L	29	58	16.5	78.5
3L	36	72	18.5	92.5

## 3 pipes with 2 fixing bolts



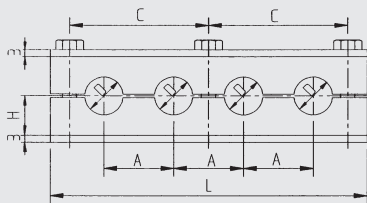
Size	A	C	H	L
1L	20	20	13.5	56
2L	29	29	16.5	85
3L	36	36	18.5	106

## 4 pipes with 2 fixing bolts



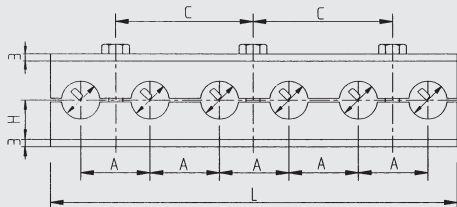
Size	A	C	H	L
1L	20	40	13.5	76
2L	29	58	16.5	114
3L	36	72	18.5	142

## 4 pipes with 3 fixing bolts



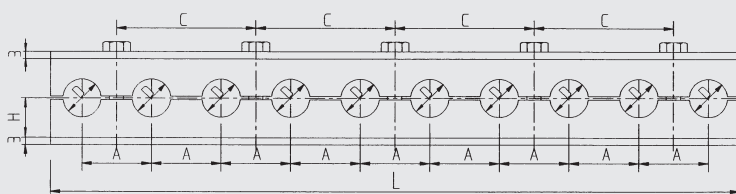
Size	A	C	H	L
1L	20	40	13.5	100.5
2L	29	58	16.5	136.5
3L	36	72	18.5	164.5

## 6 pipes with 3 fixing bolts



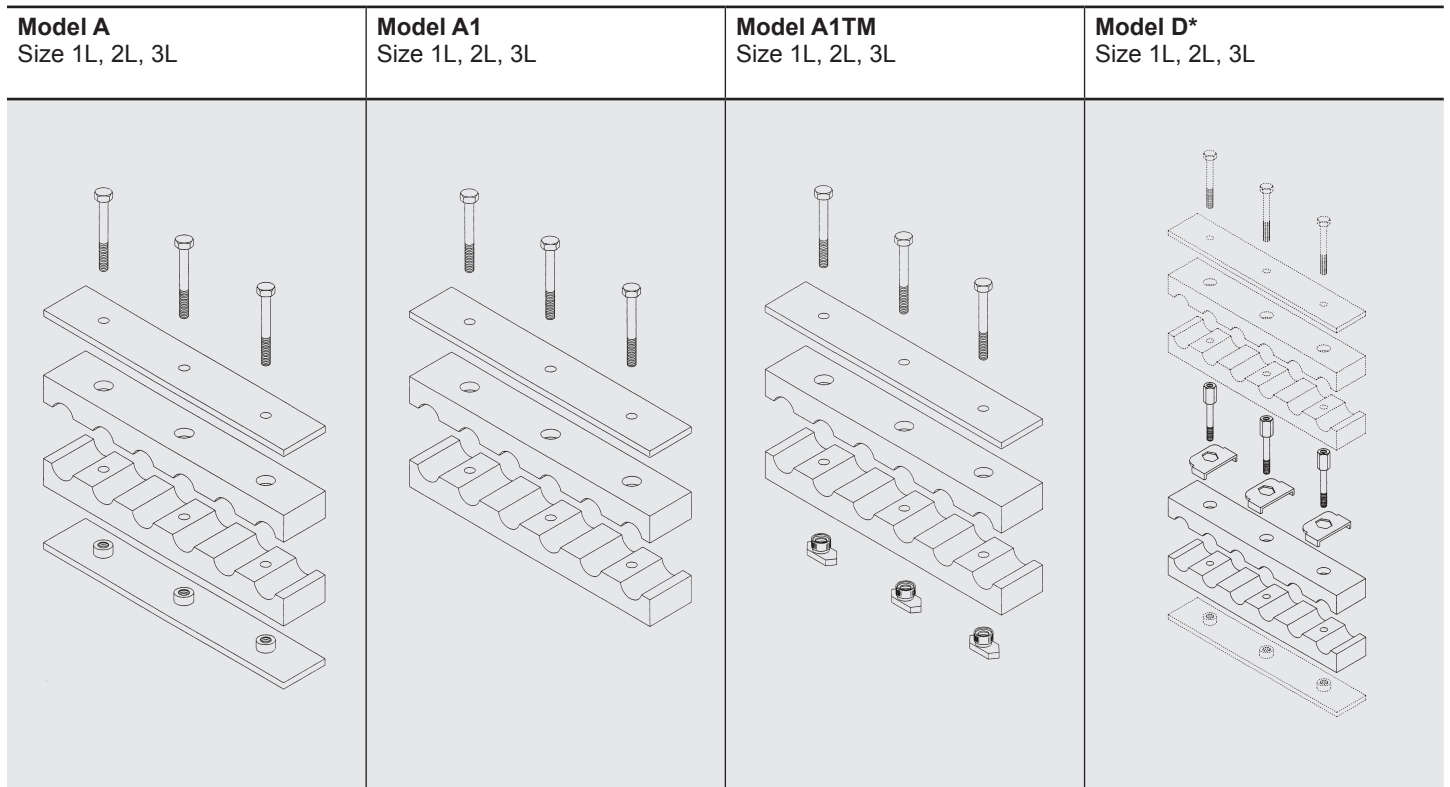
Size	A	C	H	L
1L	20	40	13.5	116
2L	29	58	16.5	172
3L	36	72	18.5	214

## 10 pipes with 5 fixing bolts



Size	A	C	H	L
1L	20	40	13.5	196
2L	29	58	16.5	288
3L	36	72	18.5	358

## Models for series strip



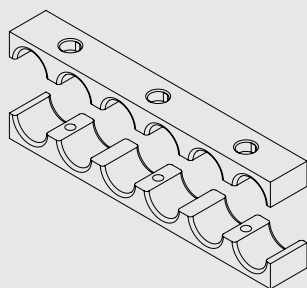
### \* Note for model D

A pair of clamp jaws along with the appropriate number of safety plates and stacking bolts are supplied as standard. Other clamp jaws, weld plates, cover plates and bolts must be ordered separately.

Size	Number and Ø of pipes	Component length L [mm]	/	Number of fixing bolts
1L	2 x D	60.5	/ 2	
	3 x D	56	/ 2	
	4 x D	76	/ 2	
	4 x D	100.5	/ 3	
	6 x D	116	/ 3	
	10 x D	196	/ 5	
2L	2 x D	78.5	/ 2	
	3 x D	85	/ 2	
	4 x D	114	/ 2	
	4 x D	136.5	/ 3	
	6 x D	172	/ 3	
	10 x D	288	/ 5	
3L	2 x D	92.5	/ 2	
	3 x D	106	/ 2	
	4 x D	142	/ 2	
	4 x D	164.5	/ 3	
	6 x D	214	/ 3	
	10 x D	358	/ 5	

## Individual parts

### Pair of clamp jaws (HRRL...KP...) Size 1L, 2L, 3L



### Model code

(also order example)

HRRL 1L KP 3x12 PP 56/2 M6

#### Range

HRRL = HY-ROS series strip

#### Size

(as per dimensions)

#### Designation

KP = pair of clamp jaws

#### Number and Ø of pipes

(as per models)

#### Material of clamp jaws

PP = polypropylene

PA = polyamide

PAFF = polyamide, flame-retardant to EN 45545-2 R22, R23, HL3

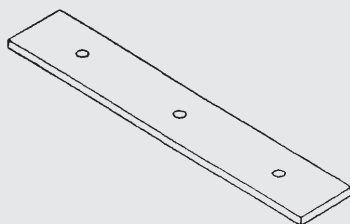
#### Component length / Number of fixing bolts

(as per models)

#### Hole

M6 = through-bore for M6 bolts

### Cover plate (HRRL...DP...) Size 1L, 2L, 3L



### Model code

(also order example)

HRRL 3L DP 30 x 3 x 106/2 ST D7 ZN

#### Range

HRRL = HY-ROS series strip

#### Size

(as per dimensions)

#### Designation

DP = cover plate

#### Component width

30 = 30 mm

#### Component thickness

3 = 3 mm

#### Component length / Number of fixing bolts

(as per models)

#### Material of steel parts

ST = steel

A2 = stainless steel (on request)

A4 = stainless steel (on request)

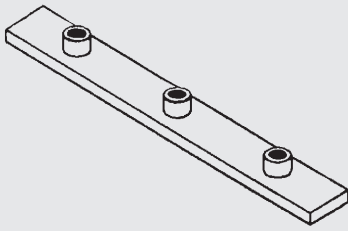
#### Hole

D7 = through-bore Ø 7 mm

#### Plating of steel parts

ZN = zinc-plated

**Weld plate  
(HRRL...AP...)**  
Size 1L, 2L, 3L



**Model code**

(also order example)

HRRL 3L AP 30 x 3 x 214/3 ST M BL

**Range**

HRRL = HY-ROS series strip

**Size**

(as per dimensions)

**Designation**

AP = weld plate

**Component width**

30 = 30 mm

**Component thickness**

3 = 3 mm

**Component length / Number of fixing bolts**

(as per models)

**Material of steel parts**

ST = steel

A2 = stainless steel (on request)

A4 = stainless steel (on request)

**Thread type**

M = metric thread

**Plating of steel parts**

BL = unplated

ZN = zinc-plated

**Hex. head bolt ISO 4014  
(6kt-shr. ISO 4014)**  
Size 1L, 2L, 3L



**Model code**

(also order example)

6kt-shr.ISO4014 - M6 x 30 - 8.8 A3B

**Range**

6kt-shr.ISO4014 = hex. head bolt to ISO 4014

**Size**

	for HRRL size
M6 x 30	1L
M6 x 35	2L
M6 x 40	3L

**Bolt quality**

8.8 = to ISO 4014

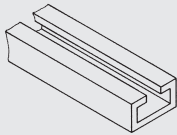
**Bolt plating**

A3B = zinc-plated

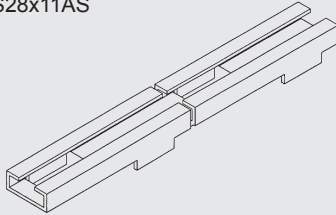
Others on request

## C mounting rail (TS)

C mounting rail TS

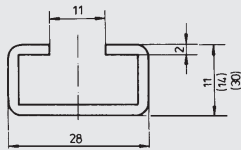


C mounting rail with weld struts  
TS28x11AS

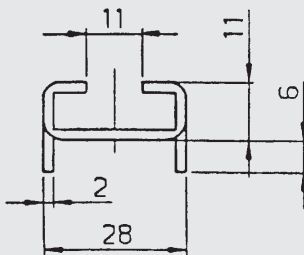


### Dimensions

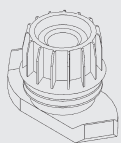
C mounting rail TS  
available in 1 m and 2 m pieces



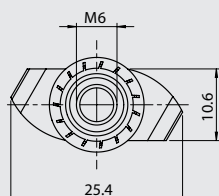
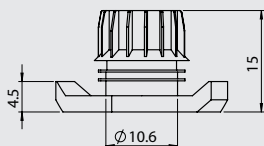
C mounting rail with weld struts  
available in 1 m pieces



## Mounting rail nut (TM)



### Dimensions



## Model code

(also order example)

HRL TS28x11 ST BL 1m

### Range

HRL = HY-ROS light range

### Model

TS28x11 = C mounting rail 28x11  
TS28x14 = C mounting rail 28x14  
TS28x30 = C mounting rail 28x30  
TS28x11AS = C mounting rail with weld struts 28x11

### Material of steel parts

ST = steel  
AL = aluminium (on request)  
A2 = stainless steel (on request)  
A4 = stainless steel (on request)

### Plating of steel parts

BL = unplated  
ZN = zinc-plated  
Others on request

### Length

1 m  
2 m (not for C mounting rail with weld struts)  
Other lengths on request

## Model code

(also order example)

HRL TMV6 ST ZN

### Range

HRL = HY-ROS light range

### Designation

TMV6 = mounting rail nut with anti-twist protection, M6  
TM6 = mounting rail nut without anti-twist protection, M6

### Material of steel parts

ST = steel  
A4 = stainless steel (on request)

### Plating of steel parts

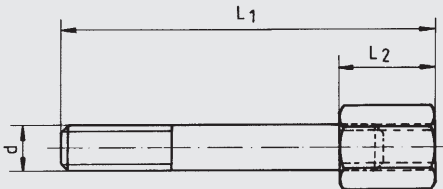
ZN = zinc-plated  
Others on request



## Stacking bolt (AF)



### Dimensions

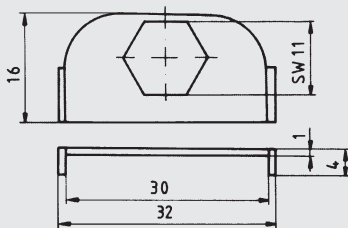


Size	Dimensions [mm]		
	L1	L2	d
0+1	34	14	M6
2	39	14	M6
3	44	14	M6

## Safety plate (SIP)



### Dimensions (for all sizes)



## Model code

(also order example)

HRL 3 AF ST M ZN

### Range

HRL = HY-ROS light range

### Size

for HRRL size  
 0+1 1L  
 2 2L  
 3 3L

### Designation

AF = stacking bolt

### Material of steel parts

ST = steel  
 A2 = stainless steel (on request)  
 A4 = stainless steel (on request)

### Thread type

M = metric thread

### Plating of steel parts

ZN = zinc-plated  
 Others on request

## Model code

(also order example)

HRL 0 SIP ST ZN

### Range

HRL = HY-ROS light range

### Size

0 = for all sizes

### Designation

SIP = safety plate

### Material of steel parts

ST = steel  
 A2 = stainless steel (on request)  
 A4 = stainless steel (on request)

### Plating of steel parts

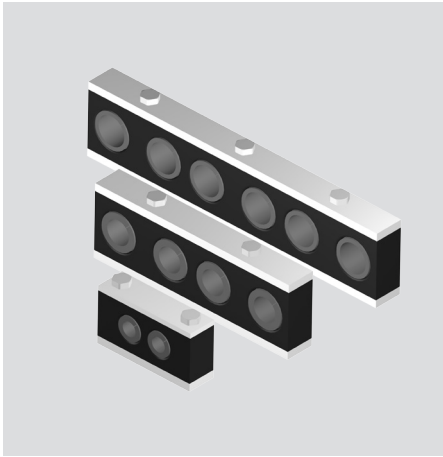
ZN = zinc-plated  
 Others on request

## NOTE

The information in this brochure relates to the operating conditions and applications described. For applications and operating conditions not described, please contact the relevant technical department.

Users bear the responsibility in all cases for determining the product's suitability in the specific application. Figures given for product characteristics are average values for a new product which are subject to an ageing process. Subject to technical modifications and errors.

**HYDAC Accessories GmbH**  
Hirschbachstr. 2  
**66280 Sulzbach/Saar**  
Tel.: +49 (0)6897 - 509-01  
Fax: +49 (0)6897 - 509-1009  
Internet: [www.hydac.com](http://www.hydac.com)  
E-mail: [info@hydac.com](mailto:info@hydac.com)



## Series Strip

### Heavy Range with Elastomer Insert HRRLE

Size	Pipe outside Ø D [mm]
2	6
	8
	10
	12
	12.7
	14
	15
	16
	17.2
	18
3*	19
	6
	8
	10
	12
	12.7
	14
	15
	16
	17.2
3	18
	19
	20
	21.3
	22
	23
	25
	26.9
	28
	30
4	32
	33.7
	35
	38
	40
	42
	45.5
	48
51	
53.4	
56.4	

\* Only with reducing piece

#### Model code

(also order example)

**HRRLE 2 A 2x15 PP 107/2 ST M10 BL**

#### Designation

HRRLE = HY-ROS series strip with elastomer insert

#### Size

2 = size 2  
3 = size 3  
4 = size 4

#### Model

A = with weld plate, cover plate and hex. head bolt  
A1 = with cover plate and hex. head bolt  
A1TM = with cover plate, hex. head bolt and mounting rail nut

#### Number of pipes x pipe outside Ø D

(as per models)

#### Material of clamp jaws

PP = polypropylene  
PA = polyamide  
PAFF = polyamide, flame-retardant to EN 45545-2 R22, R23, HL3

#### Component length / Number of fixing bolts

(as per models)

#### Material of steel parts

ST = steel  
A2 = stainless steel (on request)  
A4 = stainless steel (on request)

#### Thread type

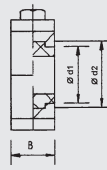
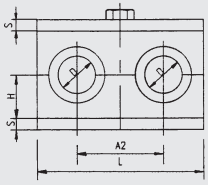
M10 = metric thread M10 (for size 2+3)  
M12 = metric thread M12 (for size 4)

#### Plating of steel parts

BL = weld plate unplated, cover plate zinc-plated, bolts zinc-plated  
ZN = weld plate zinc-plated, cover plate zinc-plated, bolts zinc-plated

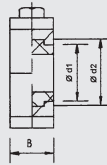
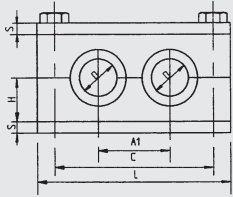
# Dimensions [mm]

## 2 pipes with 2 fixing bolts



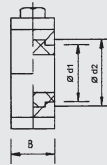
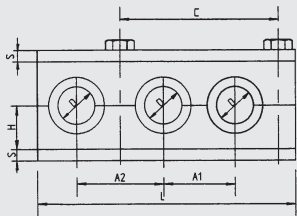
Size	d1	d2	A1	A2	B	L	H	C	S
2	25.5	31	-	46	30	83	23	-	8
3	39	46	-	60	30	115	30	-	8
4	65	74	-	93	45	173	40	-	10

## 2 pipes with 2 fixing bolts



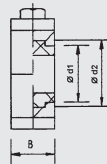
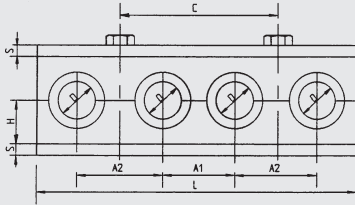
Size	d1	d2	A1	A2	B	L	H	C	S
2	25.5	31	34	-	30	107	23	80	8
3	39	46	50	-	30	134	30	110	8
4	65	74	80	-	45	199	40	173	10

## 3 pipes with 2 fixing bolts



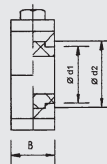
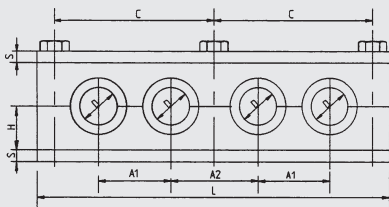
Size	d1	d2	A1	A2	B	L	H	C	S
2	25.5	31	34	46	30	135	23	80	8
3	39	46	50	60	30	179.5	30	110	8
4	65	74	80	93	45	273	40	173	10

## 4 pipes with 2 fixing bolts



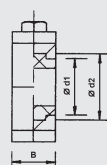
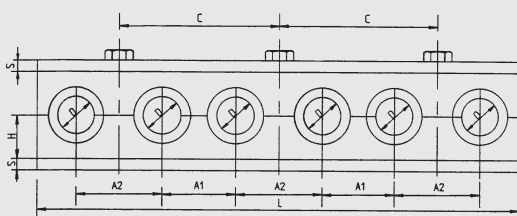
Size	d1	d2	A1	A2	B	L	H	C	S
2	25.5	31	34	46	30	163	23	80	8
3	39	46	50	60	30	225	30	110	8
4	65	74	80	93	45	346	40	173	10

## 4 pipes with 3 fixing bolts



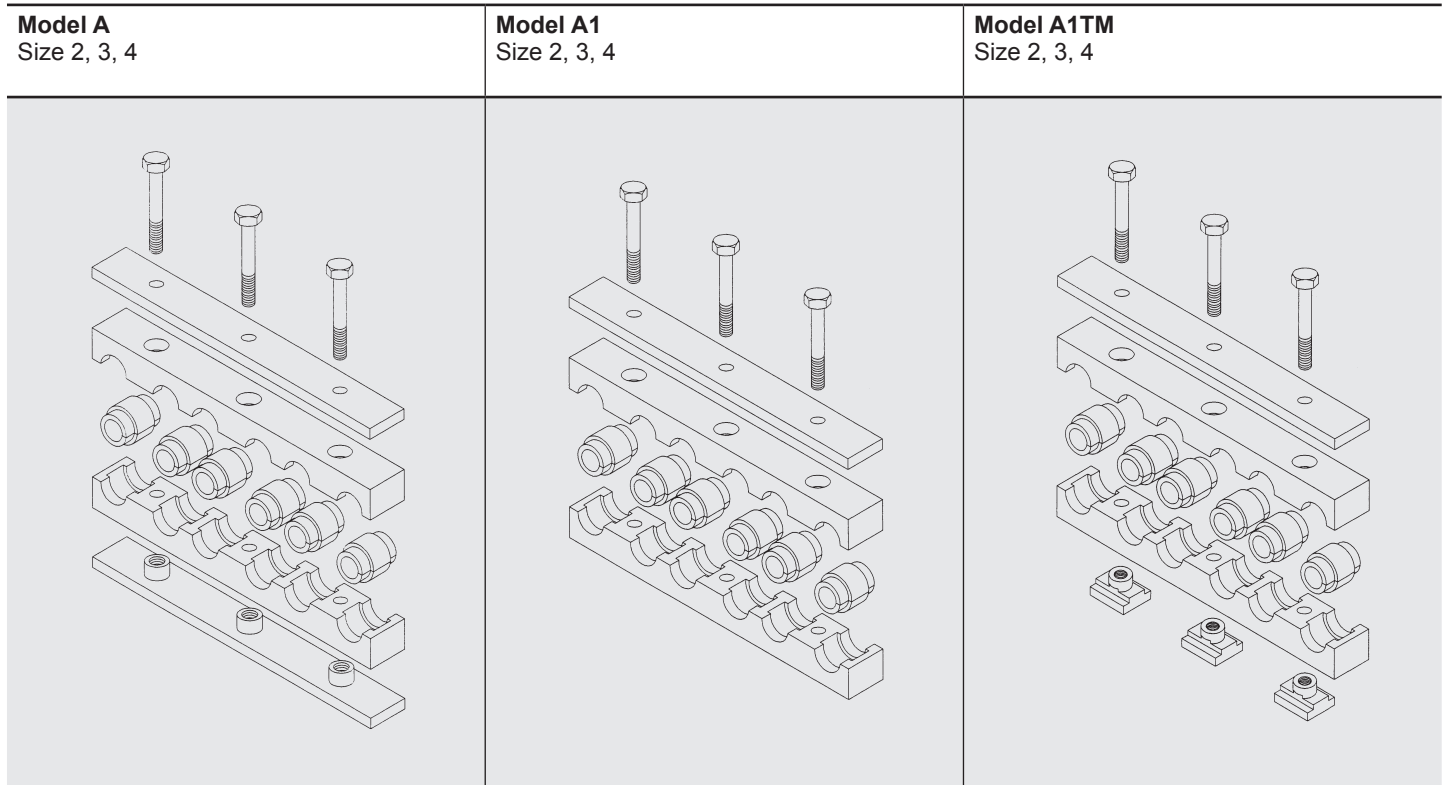
Size	d1	d2	A1	A2	B	L	H	C	S
2	25.5	31	34	46	30	187	23	80	8
3	39	46	50	60	30	244	30	110	8
4	65	74	80	93	45	373	40	173	10

## 6 pipes with 3 fixing bolts



Size	d1	d2	A1	A2	B	L	H	C	S
2	25.5	31	34	46	30	243	23	80	8
3	39	46	50	60	30	335	30	110	8
4	65	74	80	93	45	519	40	173	10

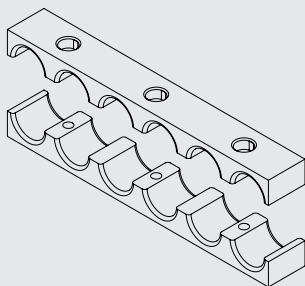
## Models for series strip, heavy range



Size	Number and Ø of pipes	Component length L [mm]	Number of fixing bolts
2	2 x D	83 / 1	
	2 x D	107 / 2	
	3 x D	135 / 2	
	4 x D	163 / 2	
	4 x D	187 / 3	
3	6 x D	243 / 3	
	2 x D	115 / 1	
	2 x D	134 / 2	
	3 x D	179.5 / 2	
	4 x D	225 / 2	
4	4 x D	244 / 3	
	6 x D	335 / 3	
	2 x D	199 / 2	
	3 x D	273 / 2	
	4 x D	373 / 3	
	6 x D	519 / 3	

## Individual parts

**Pair of clamp jaws**  
(HRRLE...KP...)  
Size 2, 3, 4



**Model code**  
(also order example)

HRRLE 4 KP 4x65 PP 346/2

**Range**

HRRLE = HY-ROS series strip with elastomer insert

**Size**

(as per dimensions)

**Designation**

KP = pair of clamp jaws

**Number of pipes x diameter d1**

(as per models)

**Material of clamp jaws**

PP = polypropylene

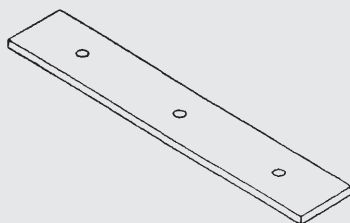
PA = polyamide

PAFF = polyamide, flame-retardant to EN 45545-2 R22, R23, HL3

**Component length / Number of fixing bolts**

(as per models)

**Cover plate**  
(HRRL...DP...)  
Size 2, 3, 4



**Model code**

(also order example)

HRRLE 4 DP 45x10x519 / 3 ST ZN

**Range**

HRRLE = HY-ROS series strip with elastomer insert

**Size**

(as per dimensions)

**Designation**

DP = cover plate

**Component width B x component thickness S x component length L**

(as per dimensions)

**Number of fixing bolts**

(as per models)

**Material of steel parts**

ST = steel

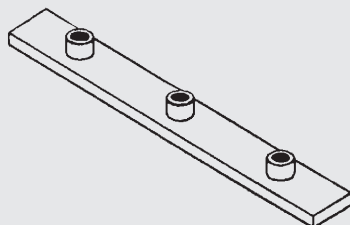
A2 = stainless steel (on request)

A4 = stainless steel (on request)

**Plating of steel parts**

ZN = zinc-plated

**Weld plate**  
(HRRLE...AP...)  
Size 2, 3, 4



**Model code**

(also order example)

HRRLE 3 AP 30x8x225 / 2 ST M10 BL

**Range**

HRRLE = HY-ROS series strip with elastomer insert

**Size**

(as per dimensions)

**Designation**

AP = weld plate

**Component width B x component thickness S x component length L**

(as per dimensions)

**Number of fixing bolts**

(as per models)

**Material of steel parts**

ST = steel

A2 = stainless steel (on request)

A4 = stainless steel (on request)

**Thread type**

M10 = metric thread M10 (for size 2+3)

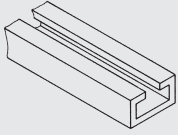
M12 = metric thread M12 (for size 4)

**Plating of steel parts**

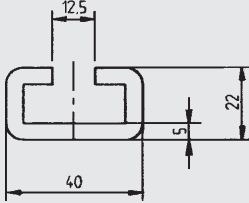
BL = unplated

ZN = zinc-plated

## C mounting rail (TS)



### Dimensions



**Note:**  
Available in 1 m and 2 m pieces

## Model code (also order example)

HRS TS40x22 ST BL 2m

### Range

HRS = HY-ROS heavy range

### Model

TS40x22 = C mounting rail 40x22

### Material of steel parts

ST = steel  
A2 = stainless steel (on request)  
A4 = stainless steel (on request)

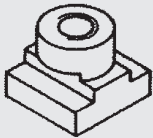
### Plating of steel parts

BL = unplated  
ZN = zinc-plated

### Length

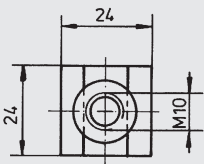
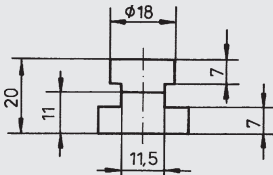
1 m  
2 m  
Other lengths on request

## Mounting rail nut (TM)

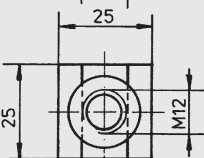
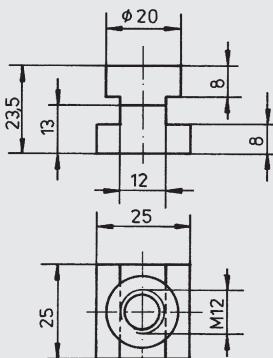


### Dimensions

Mounting rail nut TM10



Mounting rail nut TM12



## Model code (also order example)

HRS TM10 ST M ZN

### Range

HRS = HY-ROS heavy range

### Designation

TM10	= mounting rail nut size M10	<u>for HRRLE size</u> 2+3
TM12	= mounting rail nut size M12	4

### Material of steel parts

ST = steel  
A2 = stainless steel (on request)  
A4 = stainless steel (on request)

### Thread type

M = metric thread

### Plating of steel parts

ZN = zinc-plated  
Others on request

**Hex. head bolt ISO 4014  
(6kt-shr. ISO 4014)**



**Model code**

(also order example)

6kt-shr.ISO4014 - M10 x 70 - 8.8 A3B

**Range**

6kt-shr.ISO4014 = hex. head bolt to ISO 4014

**Size**

	for HRRLE size
M10 x 60	2
M10 x 70	3
M12 x 100	4

**Bolt quality**

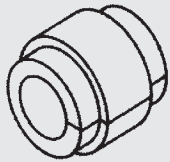
8.8 = to ISO 4014

**Bolt plating**

no details = unplated  
A3B = zinc-plated

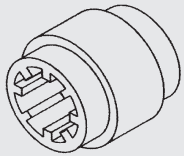
**Elastomer insert, smooth  
(HRES...EE...)**

Size 2/4L, 3/6L, 4



**Elastomer insert, ribbed  
(HRERS...EE...)**

Size 2/4L, 3/6L, 4



**Model code**

(also order example)

HRES 2/4L EE 16 TPE

**Range**

HRES = elastomer insert, internal surface smooth  
HRERS = elastomer insert, internal surface ribbed

**Size**

2/4L = size 2  
3/6L = size 3  
4 = size 4

**Designation**

EE = elastomer insert

**Pipe diameter**

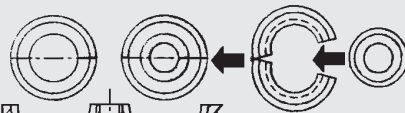
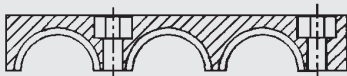
(as per dimensions)

**Insert material**

TPE = thermoplastic elastomer

**Reducing piece  
(HRES...RE...)**

Size 3/2



Elastomer insert    Reducing piece with elastomer insert

**Model code**

(also order example)

HRES 3/2 RE PP

**Range**

HRES = elastomer insert

**Size**

3/2 = size 3 is reduced to size 2

**Designation**

RE = reducing piece

**Material of reducing piece**

PP = polypropylene  
PA = polyamide

**NOTE**

The information in this brochure relates to the operating conditions and applications described. For applications and operating conditions not described, please contact the relevant technical department.

Users bear the responsibility in all cases for determining the product's suitability in the specific application. Figures given for product characteristics are average values for a new product which are subject to an ageing process. Subject to technical modifications and errors.

**HYDAC Accessories GmbH**

Hirschbachstr. 2  
66280 Sulzbach/Saar  
Tel.: +49 (0)6897 - 509-01  
Fax: +49 (0)6897 - 509-1009  
Internet: www.hydac.com  
E-mail: info@hydac.com