



Series strips

Light range HRRL

Heavy range with elastomer insert

HRRLE

General

HY-ROS series strips are an in-house development, derived from the needs of the market.

They enable rapid and secure installation of hose groups and (dynamically loaded) pipe groups.

The accumulation of individual clamps is thus avoided.

HY-ROS series strips offer many advantages:

- Bundled, clear and safe system of laying
- Space-saving and compact arrangement
- Simple and rapid installation
- Reduced installation times
- Vibration, shock and noise damping
- Protection of sensitive components
- Compensation of pipe and cable tolerances
- Different diameters in one series strip

Depending on the application, series strips with a smooth internal surface or with elastomer inserts are used.

Up to 10 pipes/hoses with diameters from 6 mm to 56.4 mm can be fastened as standard in each of the 3 sizes of the various models.

On request ...

... customised solutions in numerous shapes and designs, also with different diameters, can be supplied in addition to the standard series strips.

This allows you to make the most of your time and the available space.

NOTE

The information in this brochure relates to the operating conditions and applications described. For applications and operating conditions not described, please contact the relevant technical department.

The operator is always responsible for determining the product suitability for the specific application. Quantified values for product characteristics are average values for a new product that undergo a time deterioration process.

Subject to technical modifications and errors.

HYDAC Accessories GmbH

Hirschbachstr. 2

66280 Sulzbach/Saar

Tel.: +49 (0)6897 - 509-01

Internet: www.hydac.com

E-mail: accessories@hydac.com

Series strip

Light range HRRL



Size	Pipe outside Ø D [mm]
1L	6
	6.4
	8
	9.5
	10
	12
2L	12.7
	13.7
	14
	15
	16
	17.1
3L	18
	19
	20
	21.3
	22
	23
	25
	25.4

Model code

(also order example)

HRRL 1L A 4x12 PP 76/2 ST M6 BL

Range

HRRL = HY-ROS series strip

Size

1L = size 1L

2L = size 2L

3L = size 3L

Model

A = with weld plate, cover plate and hex. head bolt

A1 = with cover plate and hex. head bolt

A1TM = with cover plate, hex. head bolt and mounting rail nut

D = with build-up bolt and locking plate

Number of pipes x pipe outside Ø D

(as per models)

Material of clamp jaws

PP = polypropylene

PA = polyamide

PAFF = polyamide, flame-retardant to EN 45545-2 R22, R23, HL3

Component length / Number of fixing bolts

(as per models)

Material of steel parts

ST = steel

A2 = stainless steel (on request)

A4 = stainless steel (on request)

Thread type

M6 = metric thread M6

Plating of steel parts

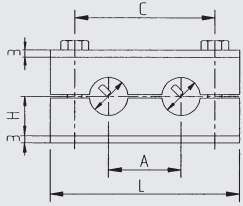
BL = weld plate unplated, cover plate zinc-plated, bolts zinc-plated

ZN = weld plate zinc-plated, cover plate zinc-plated, bolts zinc-plated

Note: Exposed parts may show signs of flash rust!

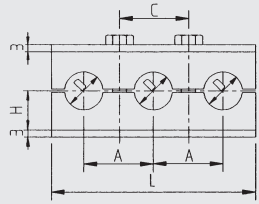
Dimensions [mm]

2 pipes with 2 fixing bolts



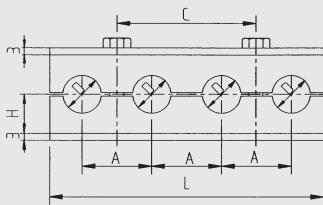
Size	A	C	H	L
1L	20	40	13.5	60.5
2L	29	58	16.5	78.5
3L	36	72	18.5	92.5

3 pipes with 2 fixing bolts



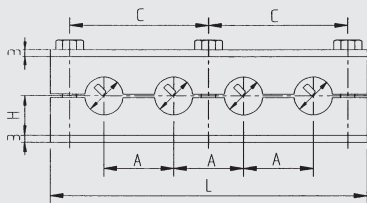
Size	A	C	H	L
1L	20	20	13.5	56
2L	29	29	16.5	85
3L	36	36	18.5	106

4 pipes with 2 fixing bolts



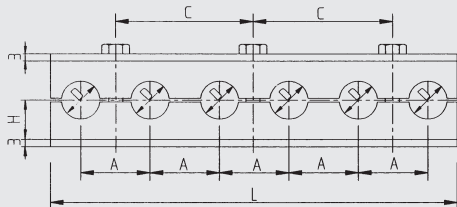
Size	A	C	H	L
1L	20	40	13.5	76
2L	29	58	16.5	114
3L	36	72	18.5	142

4 pipes with 3 fixing bolts



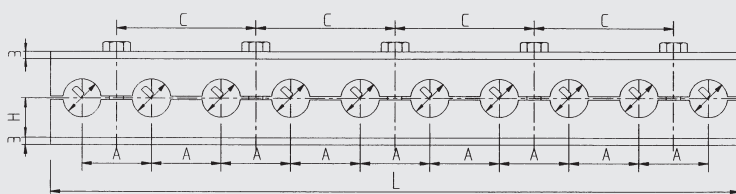
Size	A	C	H	L
1L	20	40	13.5	100.5
2L	29	58	16.5	136.5
3L	36	72	18.5	164.5

6 pipes with 3 fixing bolts



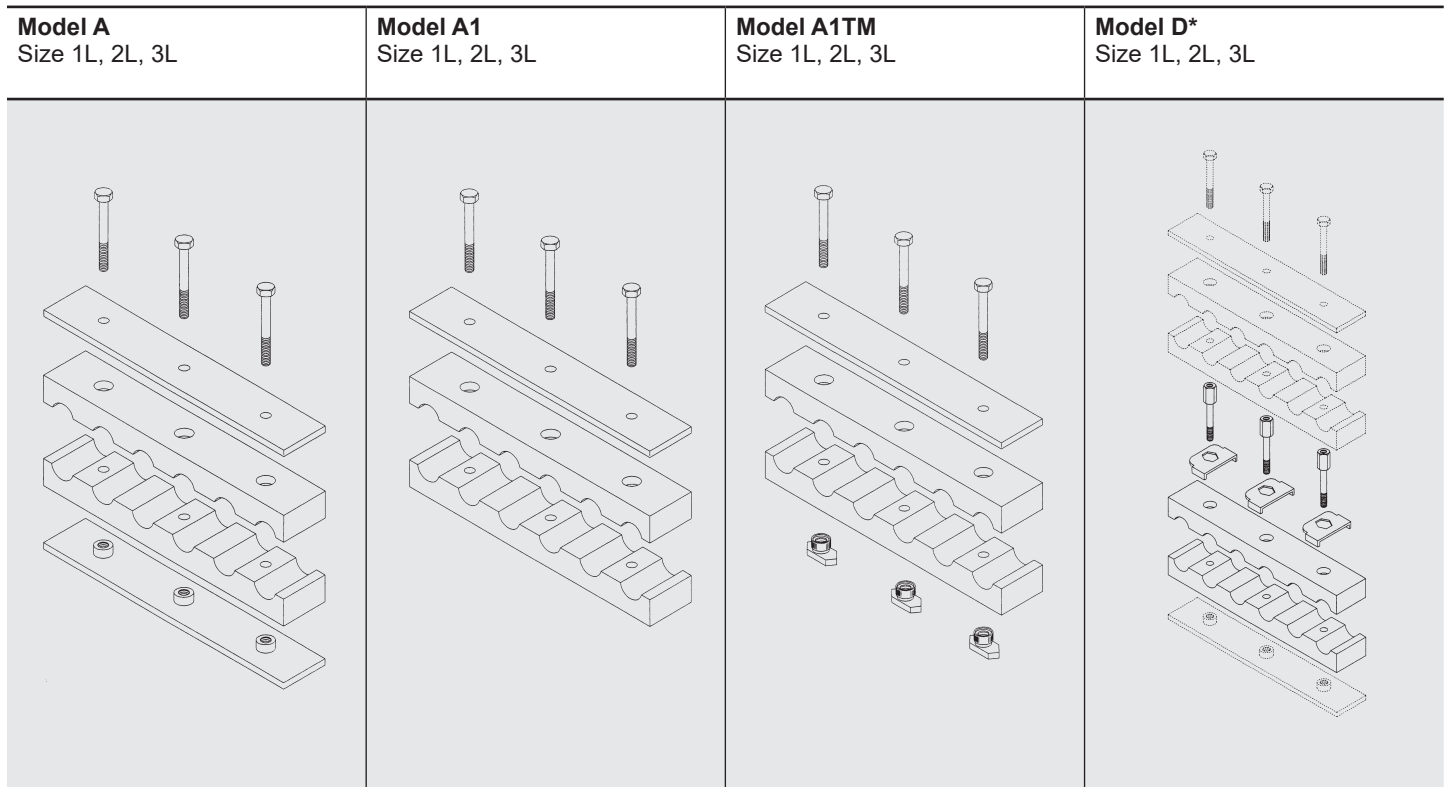
Size	A	C	H	L
1L	20	40	13.5	116
2L	29	58	16.5	172
3L	36	72	18.5	214

10 pipes with 5 fixing bolts



Size	A	C	H	L
1L	20	40	13.5	196
2L	29	58	16.5	288
3L	36	72	18.5	358

Models for series strip



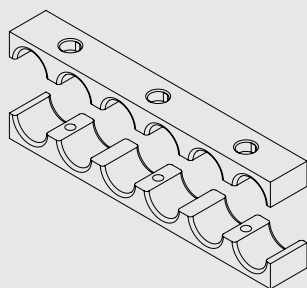
* Note for model D

One pair of clamp jaws along with the appropriate number of locking plates and build-up bolts are supplied as standard. Other clamp jaws, weld plates, cover plates and bolts must be ordered separately.

Size	Number and Ø of pipes	Component length L [mm]	/	Number of fixing bolts
1L	2 x D	60.5	/	2
	3 x D	56	/	2
	4 x D	76	/	2
	4 x D	100.5	/	3
	6 x D	116	/	3
	10 x D	196	/	5
2L	2 x D	78.5	/	2
	3 x D	85	/	2
	4 x D	114	/	2
	4 x D	136.5	/	3
	6 x D	172	/	3
	10 x D	288	/	5
3L	2 x D	92.5	/	2
	3 x D	106	/	2
	4 x D	142	/	2
	4 x D	164.5	/	3
	6 x D	214	/	3
	10 x D	358	/	5

Individual parts

Pair of clamp jaws (HRRL...KP...) Size 1L, 2L, 3L



Model code

(also order example)

HRRL 1L KP 3x12 PP 56/2 M6

Range

HRRL = HY-ROS series strip

Size

(as per dimensions)

Designation

KP = pair of clamp jaws

Number and Ø of pipes

(as per models)

Material of clamp jaws

PP = polypropylene

PA = polyamide

PAFF = polyamide, flame-retardant to EN 45545-2 R22, R23, HL3

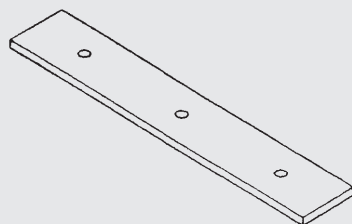
Component length / Number of fixing bolts

(as per models)

Hole

M6 = through-bore for M6 bolts

Cover plate (HRRL...DP...) Size 1L, 2L, 3L



Model code

(also order example)

HRRL 3L DP 30 x 3 x 106/2 ST D7 ZN

Range

HRRL = HY-ROS series strip

Size

(as per dimensions)

Designation

DP = cover plate

Component width

30 = 30 mm

Component thickness

3 = 3 mm

Component length / Number of fixing bolts

(as per models)

Material of steel parts

ST = steel

A2 = stainless steel (on request)

A4 = stainless steel (on request)

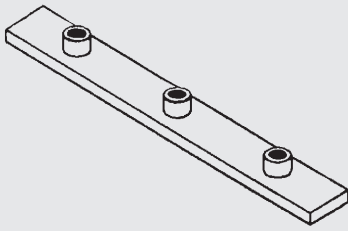
Hole

D7 = through-bore Ø 7 mm

Plating of steel parts

ZN = zinc-plated

**Weld plate
(HRRL...AP...)**
Size 1L, 2L, 3L



Model code

(also order example)

HRRL 3L AP 30 x 3 x 214/3 ST M BL

Range

HRRL = HY-ROS series strip

Size

(as per dimensions)

Designation

AP = weld plate

Component width

30 = 30 mm

Component thickness

3 = 3 mm

Component length / Number of fixing bolts

(as per models)

Material of steel parts

ST = steel

A2 = stainless steel (on request)

A4 = stainless steel (on request)

Thread type

M = metric thread

Plating of steel parts

BL = unplated

ZN = zinc-plated

Note: Exposed parts may show signs of flash rust!

**Hex. head bolt ISO 4014
(6kt-shr. ISO 4014)**
Size 1L, 2L, 3L



Model code

(also order example)

6kt-shr.ISO4014 - M6 x 30 - 8.8 A3B

Range

6kt-shr.ISO4014 = hex. head bolt to ISO 4014

Size

	for HRRL size
M6 x 30	1L
M6 x 35	2L
M6 x 40	3L

Bolt quality

8.8 = to ISO 4014

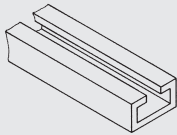
Bolt plating

A3B = zinc-plated

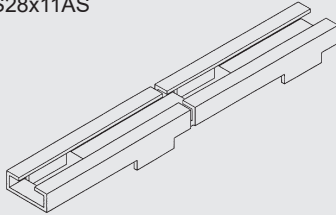
Others on request

C mounting rail (TS)

C mounting rail TS

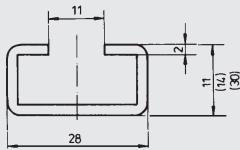


C mounting rail with weld struts
TS28x11AS

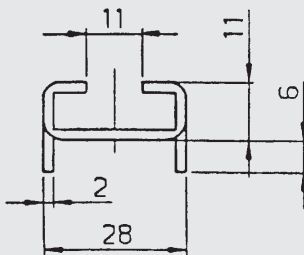


Dimensions

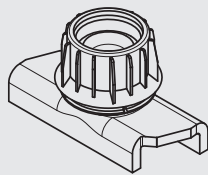
C mounting rail TS
available in 1 m and 2 m pieces



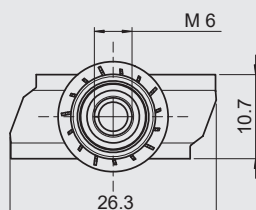
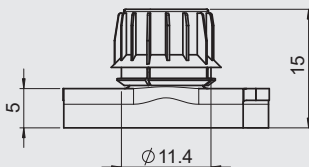
C mounting rail with weld struts
available in 1 m pieces



Mounting rail nut (TM)



Dimensions



Model code

(also order example)

HRL TS28x11 ST BL 1m

Range

HRL = HY-ROS light range

Model

TS28x11 = C mounting rail 28x11
TS28x14 = C mounting rail 28x14
TS28x30 = C mounting rail 28x30
TS28x11AS = C mounting rail with weld struts 28x11

Material of steel parts

ST = steel
AL = aluminium (on request)
A2 = stainless steel (on request)
A4 = stainless steel (on request)

Plating of steel parts

BL = unplated
ZN = zinc-plated
Others on request

Length

1 m
2 m (not for C mounting rail with weld struts)
Other lengths on request

Note: Exposed parts may show signs of flash rust!

Model code

(also order example)

HRL TMV6 ST ZN

Range

HRL = HY-ROS light range

Designation

TMV6 = mounting rail nut with anti-twist protection, M6
TM6 = mounting rail nut without anti-twist protection, M6

Material of steel parts

ST = steel
A4 = stainless steel (on request)

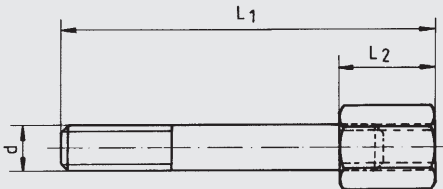
Plating of steel parts

ZN = zinc-plated
Others on request

Build-up bolt (AF)



Dimensions

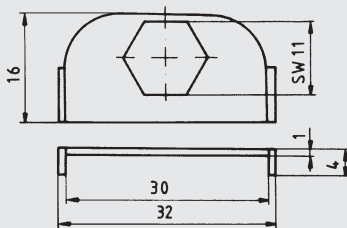


Size	Dimensions [mm]		
	L1	L2	d
0+1	34	14	M6
2	39	14	M6
3	44	14	M6

Locking plate (SIP)



Dimensions (for all sizes)



Model code (also order example)

HRL 3 AF ST M ZN

Range

HRL = HY-ROS light range

Size

for HRRL size
 0+1 1L
 2 2L
 3 3L

Designation

AF = build-up bolt

Material of steel parts

ST = steel
 A2 = stainless steel (on request)
 A4 = stainless steel (on request)

Thread type

M = metric thread

Plating of steel parts

ZN = zinc-plated
 Others on request

Model code (also order example)

HRL 0 SIP ST ZN

Range

HRL = HY-ROS light range

Size

0 = for all sizes

Designation

SIP = locking plate

Material of steel parts

ST = steel
 A2 = stainless steel (on request)
 A4 = stainless steel (on request)

Plating of steel parts

ZN = zinc-plated
 Others on request

NOTE

The information in this brochure relates to the operating conditions and applications described. For applications and operating conditions not described, please contact the relevant technical department.

The operator is always responsible for determining the product suitability for the specific application. Quantified values for product characteristics are average values for a new product that undergo a time deterioration process.

Subject to technical modifications and errors.

HYDAC Accessories GmbH

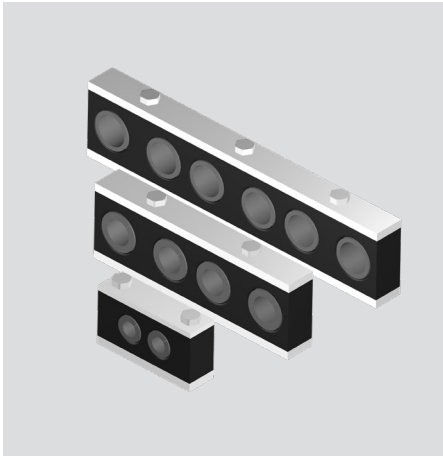
Hirschbachstr. 2

66280 Sulzbach/Saar

Tel.: +49 (0)6897 - 509-01

Internet: www.hydac.com

E-mail: accessories@hydac.com



Series strip

Heavy range with elastomer insert
HRRLE

Size	Pipe outside Ø D [mm]
2	6
	8
	10
	12
	12.7
	14
	15
	16
	17.2
	18
3*	19
	6
	8
	10
	12
	12.7
	14
	15
	16
	17.2
3	18
	19
	20
	21.3
	22
	23
	25
	26.9
	28
	30
4	32
	33.7
	35
	38
	40
	42
	45.5
	48
51	
53.4	
56.4	

* Only with reducing piece

Model code

(also order example)

HRRLE 2 A 2x15 PP 107/2 ST M10 BL

Range

HRRLE = HY-ROS series strip with elastomer insert

Size

2 = size 2
3 = size 3
4 = size 4

Model

A = with weld plate, cover plate and hex. head bolt
A1 = with cover plate and hex. head bolt
A1TM = with cover plate, hex. head bolt and mounting rail nut

Number of pipes x pipe outside Ø D

(as per models)

Material of clamp jaws

PP = polypropylene
PA = polyamide
PAFF = polyamide, flame-retardant to EN 45545-2 R22, R23, HL3

Component length / number of fastening bolts

(as per models)

Material of steel parts

ST = steel
A2 = stainless steel (on request)
A4 = stainless steel (on request)

Thread type

M10 = metric thread M10 (for size 2+3)
M12 = metric thread M12 (for size 4)

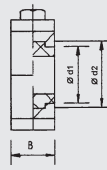
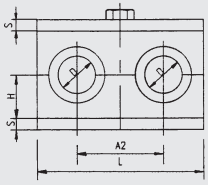
Plating of steel parts

BL = weld plate unplated, cover plate zinc-plated, bolts zinc-plated
ZN = weld plate zinc-plated, cover plate zinc-plated, bolts zinc-plated

Note: Exposed parts may show signs of flash rust!

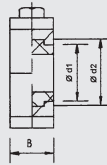
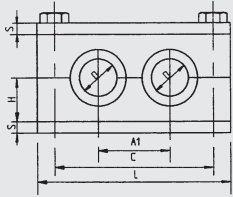
Dimensions [mm]

2 pipes with 1 fixing bolt



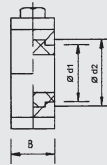
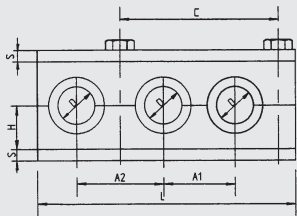
Size	d1	d2	A1	A2	B	L	H	C	S
2	25.5	31	-	46	30	83	23	-	8
3	39	46	-	60	30	115	30	-	8
4	65	74	-	93	45	173	40	-	10

2 pipes with 2 fixing bolts



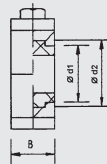
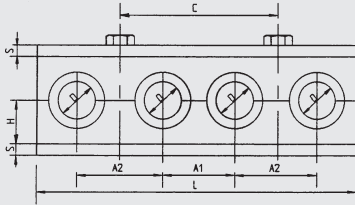
Size	d1	d2	A1	A2	B	L	H	C	S
2	25.5	31	34	-	30	107	23	80	8
3	39	46	50	-	30	134	30	110	8
4	65	74	80	-	45	199	40	173	10

3 pipes with 2 fixing bolts



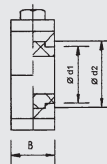
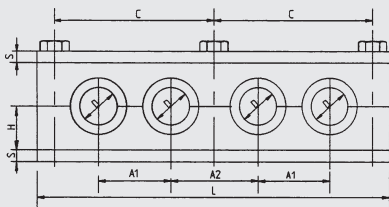
Size	d1	d2	A1	A2	B	L	H	C	S
2	25.5	31	34	46	30	135	23	80	8
3	39	46	50	60	30	179.5	30	110	8
4	65	74	80	93	45	273	40	173	10

4 pipes with 2 fixing bolts



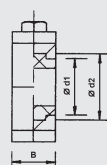
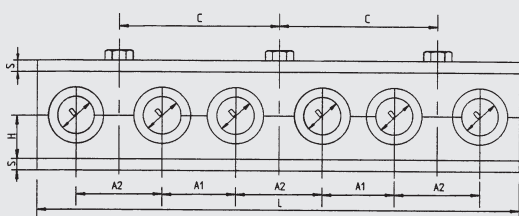
Size	d1	d2	A1	A2	B	L	H	C	S
2	25.5	31	34	46	30	163	23	80	8
3	39	46	50	60	30	225	30	110	8
4	65	74	80	93	45	346	40	173	10

4 pipes with 3 fixing bolts



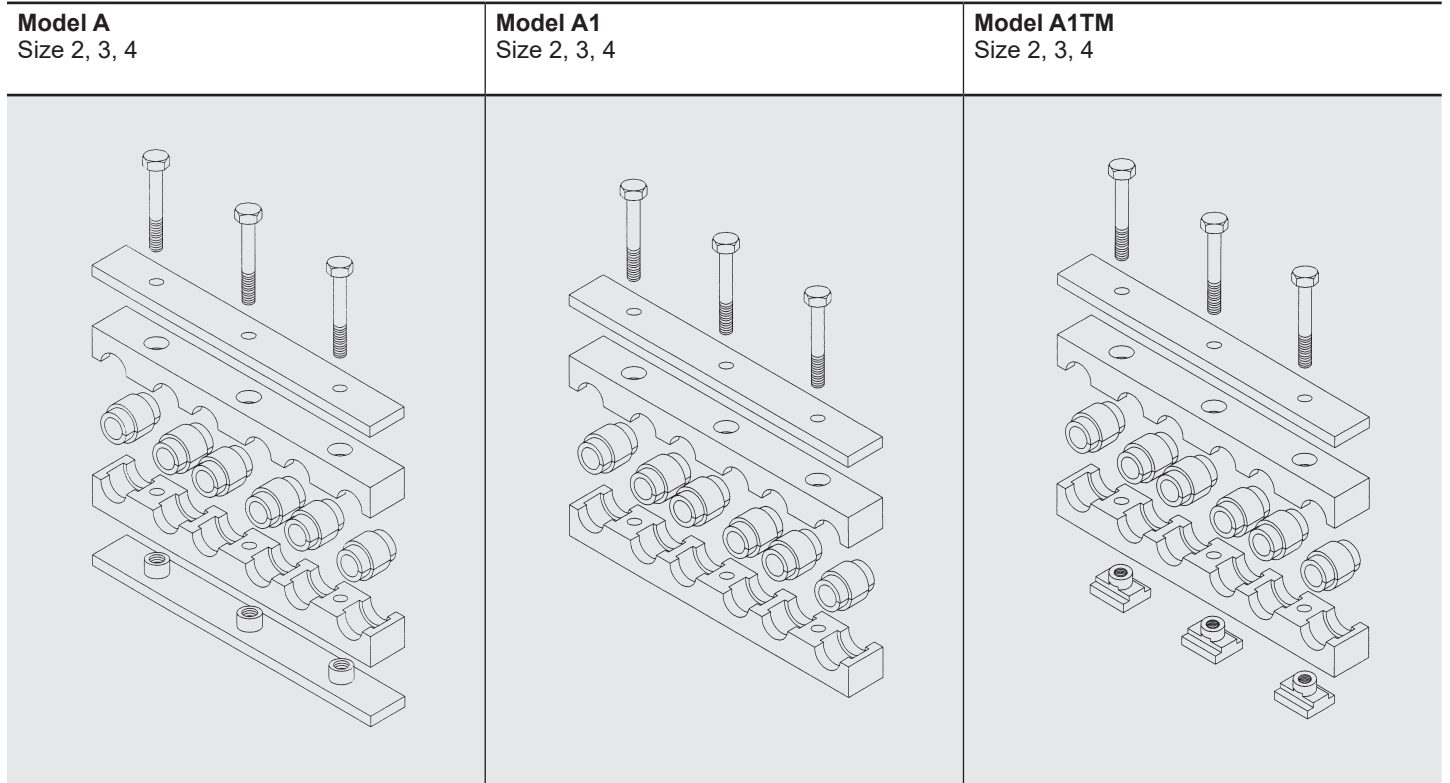
Size	d1	d2	A1	A2	B	L	H	C	S
2	25.5	31	34	46	30	187	23	80	8
3	39	46	50	60	30	244	30	110	8
4	65	74	80	93	45	373	40	173	10

6 pipes with 3 fixing bolts



Size	d1	d2	A1	A2	B	L	H	C	S
2	25.5	31	34	46	30	243	23	80	8
3	39	46	50	60	30	335	30	110	8
4	65	74	80	93	45	519	40	173	10

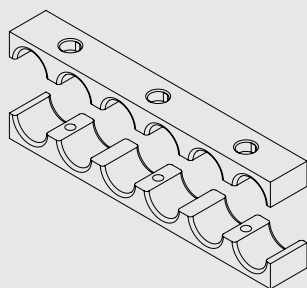
Models for series strip, heavy range



Size	Number and Ø of pipes	Component length L [mm]	Number of fixing bolts
2	2 x D	83 /	1
	2 x D	107 /	2
	3 x D	135 /	2
	4 x D	163 /	2
	4 x D	187 /	3
3	6 x D	243 /	3
	2 x D	115 /	1
	2 x D	134 /	2
	3 x D	179.5 /	2
	4 x D	225 /	2
4	4 x D	244 /	3
	6 x D	335 /	3
	2 x D	199 /	2
	3 x D	273 /	2
4	4 x D	373 /	3
	6 x D	519 /	3

Individual parts

Pair of clamp jaws (HRRLE...KP...) Size 2, 3, 4



Model code (also order example)

HRRLE 4 KP 4x65 PP 346/2

Range

HRRLE = HY-ROS series strip with elastomer insert

Size

(as per dimensions)

Designation

KP = pair of clamp jaws

Number of pipes x diameter d1

(as per models)

Material of clamp jaws

PP = polypropylene

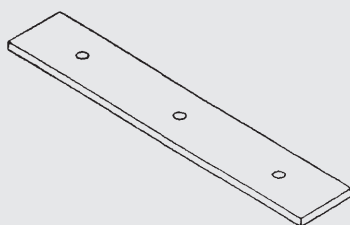
PA = polyamide

PAFF = polyamide, flame-retardant to EN 45545-2 R22, R23, HL3

Component length / Number of fixing bolts

(as per models)

Cover plate (HRRLE...DP...) Size 2, 3, 4



Model code (also order example)

HRRLE 4 DP 45x10x519 / 3 ST ZN

Range

HRRLE = HY-ROS series strip with elastomer insert

Size

(as per dimensions)

Designation

DP = cover plate

Component width B x component thickness S x component length L

(as per dimensions)

Number of fixing bolts

(as per models)

Material of steel parts

ST = steel

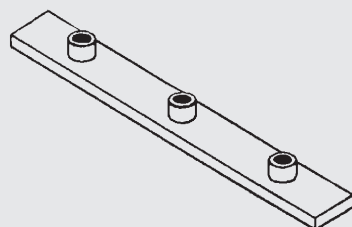
A2 = stainless steel (on request)

A4 = stainless steel (on request)

Plating of steel parts

ZN = zinc-plated

Weld plate (HRRLE...AP...) Size 2, 3, 4



Model code (also order example)

HRRLE 3 AP 30x8x225 / 2 ST M10 BL

Range

HRRLE = HY-ROS series strip with elastomer insert

Size

(as per dimensions)

Designation

AP = weld plate

Component width B x component thickness S x component length L

(as per dimensions)

Number of fixing bolts

(as per models)

Material of steel parts

ST = steel

A2 = stainless steel (on request)

A4 = stainless steel (on request)

Thread type

M10 = metric thread M10 (for size 2+3)

M12 = metric thread M12 (for size 4)

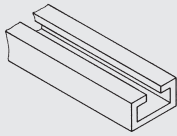
Plating of steel parts

BL = unplated

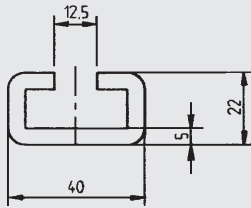
ZN = zinc-plated

Note: Exposed parts may show signs of flash rust!

C mounting rail (TS)



Dimensions



Note:
Available in 1 m and 2 m pieces

Model code (also order example)

HRS TS40x22 ST BL 2m

Range

HRS = HY-ROS heavy range

Model

TS40x22 = C mounting rail 40x22

Material of steel parts

ST = steel
A2 = stainless steel (on request)
A4 = stainless steel (on request)

Plating of steel parts

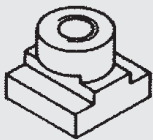
BL = unplated
ZN = zinc-plated

Length

1 m
2 m
Other lengths on request

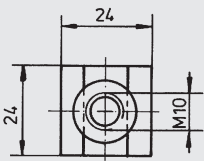
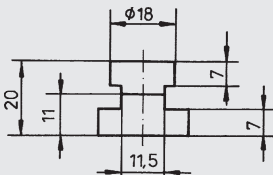
Note: Exposed parts may show signs of flash rust!

Mounting rail nut (TM)

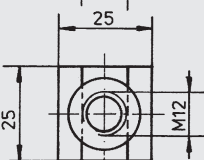
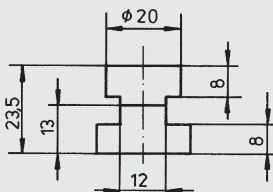


Dimensions

Mounting rail nut TM10



Mounting rail nut TM12



Model code (also order example)

HRS TM10 ST M ZN

Range

HRS = HY-ROS heavy range

Designation

TM10	= mounting rail nut size M10	<u>for HRRLE size</u> 2+3
TM12	= mounting rail nut size M12	4

Material of steel parts

ST = steel
A2 = stainless steel (on request)
A4 = stainless steel (on request)

Thread type

M = metric thread

Plating of steel parts

ZN = zinc-plated
Others on request

Hex. head bolt ISO 4014
(6kt-shr. ISO 4014)



Model code

(also order example)

6kt-shr.ISO4014 - M10 x 70 - 8.8 A3B

Range

6kt-shr.ISO4014 = hex. head bolt to ISO 4014

Size

	for HRRLE size
M10 x 60	2
M10 x 70	3
M12 x 100	4

Bolt quality

8.8 = to ISO 4014

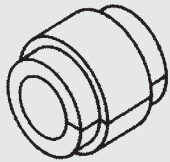
Bolt plating

no details = unplated
A3B = zinc-plated

Note: Exposed parts may show signs of flash rust!

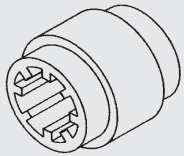
Elastomer insert, smooth
(HRES...EE...)

Size 2/4L, 3/6L, 4



Elastomer insert, ribbed
(HRERS...EE...)

Size 2/4L, 3/6L, 4



Model code

(also order example)

HRES 2/4L EE 16 TPE

Range

HRES = elastomer insert, internal surface smooth
HRERS = elastomer insert, internal surface ribbed

Size

2/4L = size 2
3/6L = size 3
4 = size 4

Designation

EE = elastomer insert

Pipe diameter

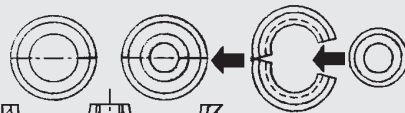
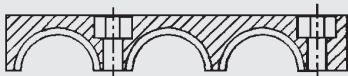
(as per dimensions)

Insert material

TPE = thermoplastic elastomer

Reducing piece
(HRES...RE...)

Size 3/2



Elastomer insert Reducing piece with elastomer insert

Model code

(also order example)

HRES 3/2 RE PP

Range

HRES = elastomer insert

Size

3/2 = size 3 is reduced to size 2

Designation

RE = reducing piece

Material of reducing piece

PP = polypropylene
PA = polyamide

NOTE

The information in this brochure relates to the operating conditions and applications described. For applications and operating conditions not described, please contact the relevant technical department.

The operator is always responsible for determining the product suitability for the specific application. Quantified values for product characteristics are average values for a new product that undergo a time deterioration process.

Subject to technical modifications and errors.

HYDAC Accessories GmbH

Hirschbachstr. 2

66280 Sulzbach/Saar

Tel.: +49 (0)6897 - 509-01

Internet: www.hydac.com

E-mail: accessories@hydac.com